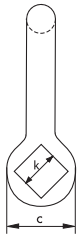
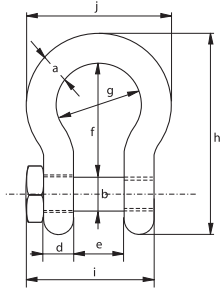




G-4164



Green Pin® Trawling Shackles

bow shackles with square headed screw pin

- **Material** : bow and pin high tensile steel, Grade 6, quenched and tempered
- **Safety Factor** : MBL equals 6 x WLL
- **Standard** : EN 13889 and
meets performance requirements of US Fed. Spec. RR-C-271, Grade A
- **Finish** : hot dipped galvanized
- **Certification** : 2.1 2.2 3.1 MTC^a CE

working load limit	diameter bow	diameter pin	diameter eye	width eye	width inside	length inside	width bow	length	length bolt	width	width bolt head	weight each
t	a	b	c	d	e	f	g	h	i	j	k	kg
2	13.5	16	34	13	22	51	32	89	57.5	58	22	0.34
3.25	16	19	40	16	27	64	43	110	71	75	27	0.63
4.75	19	22	46	19	31	76	51	129	82	89	32	1
6.5	22	25	52	22	36	83	58	144	93	102	32	1.44
8.5	25	28	59	25	43	95	68	164	108	118	36	2.21
9.5	28	32	66	28	47	108	75	185	120	131	41	3.18
12	32	35	72	32	51	115	83	201	137	147	50	4.32
13.5	35	38	80	35	57	133	92	227	149	162	50	5.67
17	38	42	88	38	60	146	99	249	164	175	60	7.36
25	45	50	103	45	74	178	126	300	192	216	60	12.38

In inch

working load limit	diameter bow	diameter pin	diameter eye	width eye	width inside	length inside	width bow	length	length bolt	width	width bolt head	weight each
t	a	b	c	d	e	f	g	h	i	j	k	lbs
2	1/2	5/8	1 11/32	1/2	7/8	2	1 1/4	3 1/2	2 1/4	2 9/32	7/8	0.75
3.25	5/8	3/4	1 9/16	5/8	1 1/16	2 17/32	1 11/16	4 11/32	2 25/32	2 15/16	1 1/16	1.39
4.75	3/4	7/8	1 13/16	3/4	1 7/32	3	2	5 3/32	3 7/32	3 1/2	1 1/4	2.21
6.5	7/8	1	2 1/16	7/8	1 13/32	3 9/32	2 9/32	5 21/32	3 21/32	4 1/32	1 1/4	3.17
8.5	1	1 1/8	2 5/16	31/32	1 11/16	3 3/4	2 11/16	6 15/32	4 1/4	4 21/32	1 13/32	4.86
9.5	1 1/8	1 1/4	2 19/32	1 3/32	1 27/32	4 1/4	2 15/16	7 9/32	4 23/32	5 5/32	1 5/8	7.01
12	1 1/4	1 3/8	2 27/32	1 1/4	2	4 17/32	3 9/32	7 29/32	5 13/32	5 25/32	1 31/32	9.52
13.5	1 3/8	1 1/2	3 5/32	1 3/8	2 1/4	5 1/4	3 5/8	8 15/16	5 7/8	6 3/8	1 31/32	12.49
17	1 1/2	1 5/8	3 15/32	1 1/2	2 3/8	5 3/4	3 29/32	9 13/16	6 15/32	6 7/8	2 3/8	16.23
25	1 3/4	2	4 1/16	1 25/32	2 29/32	7	4 31/32	11 13/26	7 9/16	8 1/2	2 3/8	27.29