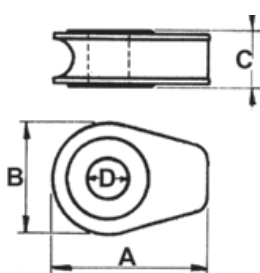




Crosby



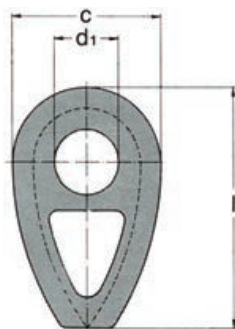
Wirekovse, massive, Crosby Type S-412

Forhindrer vridning af wiren.
Passer for kilewirelås Crosby type S-412.

Wire rope thimbles, solid, Crosby Type S-412

Prevent the wire rope from twisting.
Suitable for wedge socket Crosby S-412.

| Varenr. / Item no. | Wiredia. / Wiredia. mm | A mm | B mm | C mm | D mm | Vægt / Weight kg |
|-----------------------|---------------------------|---------|---------|---------|---------|---------------------|
| 261-551-0013 | 13 | 71 | 54 | 22 | 25 | 0,30 |
| 261-551-0016 | 16 | 119 | 86 | 30 | 30 | 1,00 |
| 261-551-0020 | 18-20 | 119 | 86 | 35 | 35 | 1,50 |
| 261-551-0022 | 22 | 154 | 114 | 41 | 41 | 2,50 |
| 261-551-0026 | 24-26 | 154 | 114 | 46 | 51 | 3,40 |
| 261-551-0030 | 28-30 | 184 | 137 | 52 | 57 | 4,21 |
| 261-551-0035 | 32-35 | 184 | 137 | 59 | 64 | 4,50 |



Wirekovse, massive DIN 3091.

Wire rope thimbles, solid DIN 3091.

| Varenr. / Item no. | Wiredia. / Wiredia. mm | a mm | b mm | d1 Standarddim. Standard pin hole mm | c mm | l mm | Vægt / Weight kg |
|-----------------------|------------------------------|---------|---------|---|---------|---------|------------------------|
| 261-550-1018 | 10 | 11 | 17,5 | 18 | 50 | 82 | 0,3 |
| 261-550-1221 | 12 | 13 | 20 | 21 | 60 | 98 | 0,5 |
| 261-550-1425 | 14 | 16 | 23,5 | 25 | 70 | 114 | 0,7 |
| 261-550-1627 | 16 | 18 | 26,0 | 28 | 80 | 130 | 0,8 |
| 261-550-1823 | 18 | 20 | 28,5 | 31 | 90 | 145 | 1,1 |
| 261-550-2035 | 20 | 22 | 31,0 | 35 | 100 | 161 | 1,4 |
| 261-550-2238 | 22 | 24 | 33,5 | 38 | 110 | 177 | 1,8 |
| 261-550-2441 | 24 | 26 | 36,0 | 41 | 120 | 193 | 2,3 |
| 261-550-2644 | 26 | 29 | 39,5 | 44 | 130 | 209 | 3,0 |
| 261-550-2843 | 28 | 31 | 42,0 | 47 | 140 | 224 | 3,7 |
| 261-550-3253 | 32 | 35 | 47,0 | 53 | 160 | 256 | 5,3 |
| 261-550-3659 | 36 | 40 | 53,0 | 59 | 180 | 288 | 7,5 |

Tolerance ±5%.